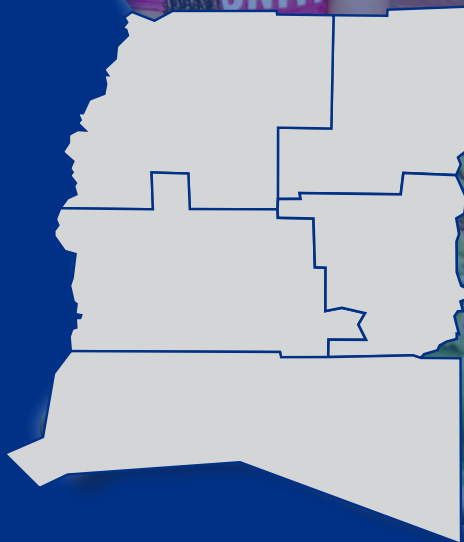


Southwest Louisiana

Report Card

2022



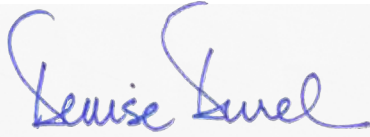
*Allen Parish
Beauregard Parish
Calcasieu Parish
Cameron Parish
Jeff Davis Parish*



Southwest Louisiana

Much like a child's school report card, this regional report card will give you an idea of how Southwest Louisiana is faring. The data and statistics used to prepare the report will show you the make-up of our community and how well we are ready for the current period.

United Way of Southwest Louisiana is prepared to meet the challenges ahead with your support.



DENISE DUREL
President and CEO
United Way of Southwest Louisiana

ES, LA



Louisiana

50th
Economic Well-Being

48th
Education

42nd
Health

48th
Family & Community

A U.S. Education Department study found

Of students who enrolled in public four-year universities, 45% had parents with college degrees and 26% did not

One third of first-generation students dropped out of college after three years, compared to 14% of those whose parents did have a degree



EDUCATION *Southwest Louisiana*

Every state has been addressing education shortfalls, but Louisiana, typically at the bottom of every education study, faces unprecedented challenges. Southwest Louisiana has not only had the 22 months of pandemic upheaval to overcome but hurricane damages and repairs, some of which have not even begun.

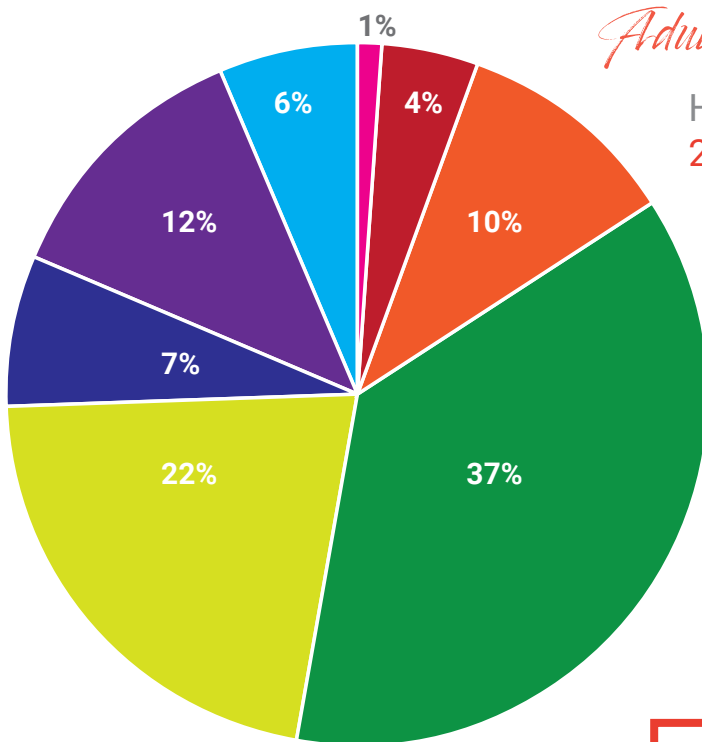
Education Week Research Center gave the nation a C on the Quality Counts report card. It gave the State of Louisiana a D+, finishing 48th once again.

	Louisiana	National Ranking	
Chance for Success	C-	49th	Early Foundations: C+, School Years: C-, <u>Adult Outcomes: D+</u>
School Finance	C-	36th	Spending: F, Equity: B-
K-12 Achievement Index	D	49th	Status: F, Change: D+, Equity: B-

In the area of Adult Outcomes, based on postsecondary educational attainment and workforce indicators, Louisiana ranks 47th in the nation.

Adult Workforce Educational Attainment

Highest level of education for adults aged 25 years and older in Southwest Louisiana



NO SCHOOL	2,639
LESS THAN HIGH SCHOOL	8,306
SOME HIGH SCHOOL	20,436
HIGH SCHOOL DIPLOMA	72,550
SOME COLLEGE	42,690
ASSOCIATE'S DEGREE	13,428
BACHELOR'S DEGREE	24,195
MASTERS, PROF, DOCTORATE	12,186

28% of the adults in Starks and Vinton have no high school diploma.



53% Louisiana's open jobs that required a career credential or college degree by 2020

75% Southwest Louisiana's workforce aged 25 years and older with less than a career credential or college degree

75% Louisiana's 4th-graders who didn't score 'proficient' on standardized testing in English 65% - US average

In 1945, the average American student between the ages of 6 and 14 had a written vocabulary of 25,000 words. Today, that vocabulary has shrunk to about 10,000 words.



81% Louisiana's 8th-graders who didn't score 'proficient' on standardized testing in Math 67% - US Average

EDUCATION *Southwest Louisiana*

A **CHILDCARE DESERT** is defined as an area with a ratio of more than 3 young children for every licensed child care slot.

Why does this matter?

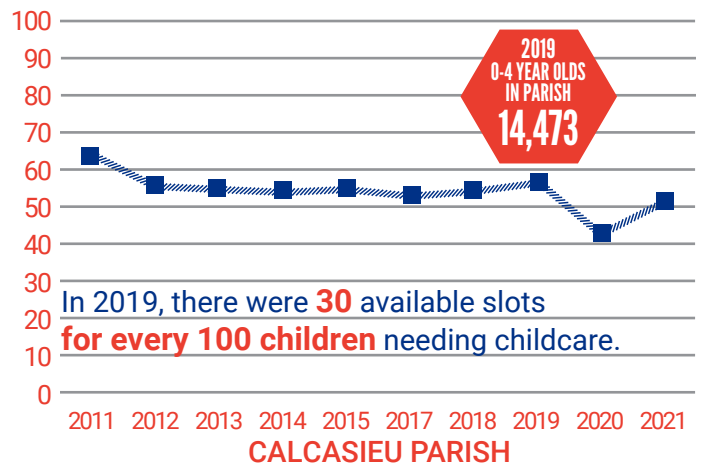
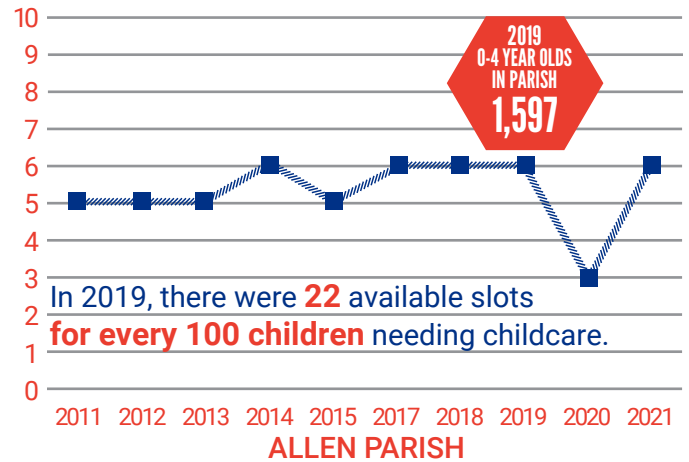
85% of brain growth occurs between birth and the age of three.

Early childhood education refers to the period of time from a child's birth to when they begin kindergarten. This time is vital because children learn to interact with others and develop interests that will stay with them for life.

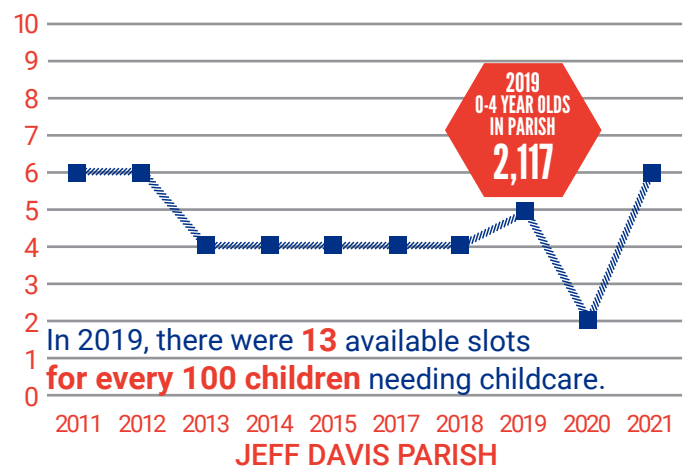
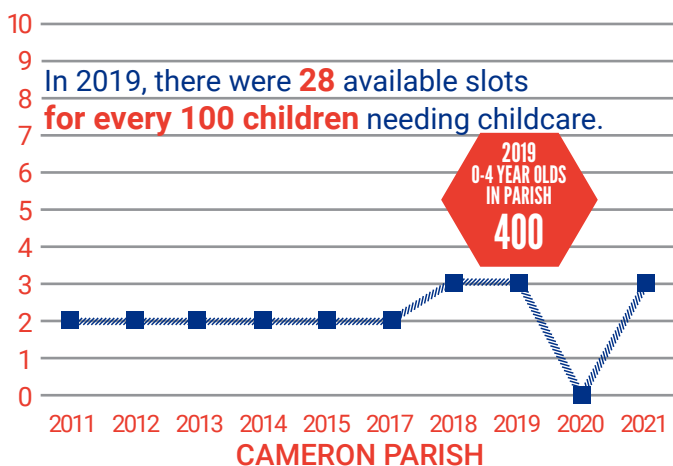
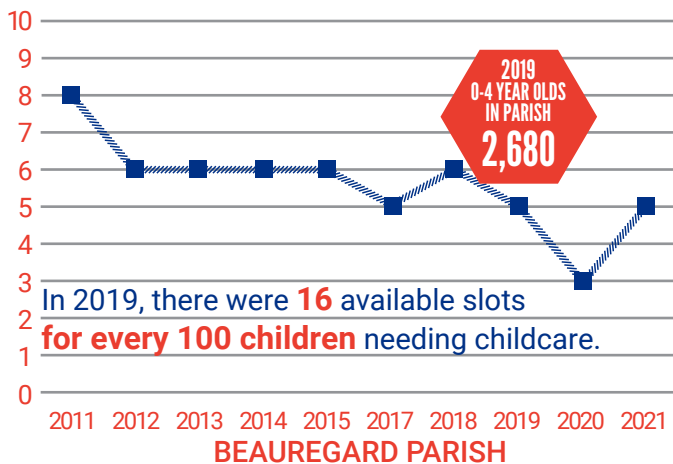
A common misperception is that early childhood education only teaches basic skills. Critical social and emotional skills develop when placed in a successful program. Anything that impacts a child's mental, emotional, psychological, or behavioral growth is considered part of their early childhood education.

Everything learned during this time period lays the groundwork for a child's future educational experiences. Increasing evidence shows that social-emotional skills play a role in a child's ability to continuously engage in learning environments, manage their own behaviors and get along with others.

Investing in early childhood is a solution that creates upward mobility through opportunity. Instead of costly and marginally successful programs later in life, quality early childhood education helps prevent the achievement gap by building the cognitive and social skills necessary for school readiness.



Early Childhood Learning Centers By Parish



The US Department of Health and Human Services suggests childcare is no longer affordable if it exceeds 7% of a household's income.



Our goal for students in Southwest Louisiana is a 96% high school graduation rate.

Southwest Louisiana

We have five priority areas

- Early Childhood
- School Readiness
- Early Grade Reading Proficiency
- Middle School Transition
- High School Success

Current high school completion rates

Louisiana	Allen	Beauregard	Calcasieu	Cameron	Jeff Davis
86%	82%	87%	87%	89%	82%

How are we creating long-term change?

- Mentoring programs
- After-school tutoring
- Summer programs
- Adult literacy
- Autism programs
- Professional development for teachers
- Leadership training for girls
- Early learning and intervention
- Structured enrichment
- Teen life skills program



NASA Astro Summer STEM Camp

71 scholarships provided to children from ALICE families

Student Spaceflight Experiment Program

315 middle school students
21 teachers
6 parishes competing
provided Region 5 with this NASA competition that is placing the winning project from F.K. White Middle School on the next mission to space

Our initiatives fill the gaps we have identified as critical and not being met by another agency.

DOLLY PARTON'S IMAGINATION LIBRARY

In partnership with donors, children are provided 1 book a month from birth until age 5 at no cost to the family. Families start a home library to encourage literacy from a young age.

- 2,626 graduates since 2012
- 18,796 books to pre-k children in 2021
- 3,510 children currently receiving books each month

LITERACY KITS

With assistance from school systems, the kits are distributed to children across Southwest Louisiana. Each kit includes books and volunteer- designed props or games, to make the reading interactive.

1,000 kits provided to elementary school students

WRITESTART PROJECT



This program provides basic school supplies, admin fees and necessary support to children and teachers in need. Providing supplies year-round ensures teachers and students can focus on learning.

\$11,300 for student uniforms

BORN LEARNING TRAIL

These bilingual walking trails give parents and caregivers an engaging way to explore everyday moments and turn them into learning opportunities.

Installed at McMurray Park in Sulphur



Ask for the United Way of Southwest Louisiana Community Investment Strategy Map for more info.



Employer-sponsored health insurance coverage

1980 - 70% of the workforce

2019 - 54% of the workforce

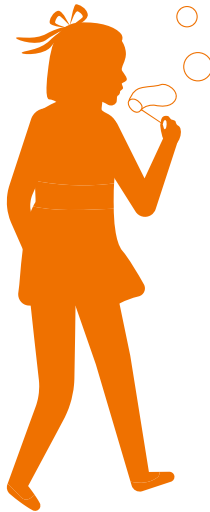
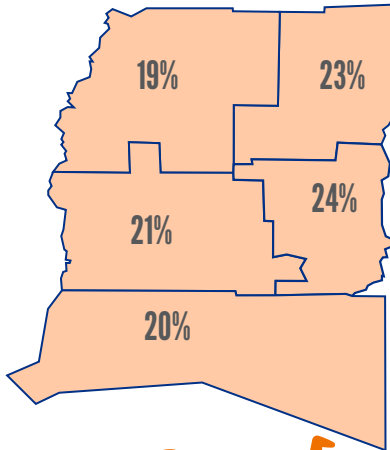
HEALTH

HEALTH *Southwest Louisiana*

High school graduation rates, access to nutritious food, the percent of children living in poverty and adult obesity rates are used to predict the health of a community as a whole.

Louisiana ranked as the worst state for children to live in and only seven parishes broke into the top half of more than 2,600 counties and parishes in the nation for how well their children are protected and provided for nation-wide. No parish placed in the top 25% in the country.

How many children in your parish live in poverty?



	NATIONAL RANK	LA	U.S.
Births to unwed mothers	2nd	53%	40%
Cesarean delivery rate	2nd	38%	30%
Preterm birth rate	2nd	13%	10%
Teen birth rate	4th	29%	19%
Low birthweight rate	2nd	11%	8%

62%



Percent of Louisiana's population with mental illness that never receive any treatment

22%
Rate of childhood obesity in Louisiana

Rate of adult obesity

Louisiana	Allen	Beauregard	Calcasieu	Cameron	Jeff Davis
38%	37%	38%	38%	35%	39%

The state's Youth Risk Behavior Surveillance System surveyed high school students to understand health and other behaviors across Louisiana.

- Only 21% report being **physically active** at least 60 minutes per day
- Only 15% report **eating vegetables** each day
- Only 12% report **eating fruit** each day

Louisiana lags the nation in median household income for senior citizens and leads with the percentage of those 55 and older who remain in the workforce, but the state has a more diverse group of seniors than the average state. Nearly 32 percent of Louisiana's 60-and-older crowd are people of color, putting the state at number 11 in the nation.

11%

Southwest Louisiana's seniors living alone

Food insecurity among older adults is higher when

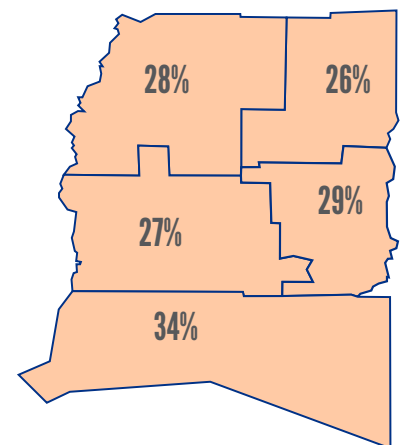
- Living near or below poverty level
- With a disability
- Rent instead of owning their own home
- Living alone

Social isolation can complicate healthcare and negatively impact physical health and mental well-being.

- lower use of healthcare
- dementia
- coronary heart disease
- stroke



How many senior citizens live in your parish?



Social isolation results in an estimated **\$6.7 billion** in annual Medicare spending.



Southwest Louisiana

Our goal for individuals in Southwest Louisiana is a 10% overall increase in health ranking.

We have five priority areas

- Healthy Beginnings
- Safe Home and Community
- Supporting Healthy Choices
- Independence
- Healthcare

49 America's Health Rankings Annual Report

High rates of smoking, child poverty and obesity contribute to the state's low ranking.

How are we creating long-term change?

- Senior food delivery programs
- Senior transportation programs
- Senior centers for socializing
- Exercise programs in rural areas
- Clinic for workers without health insurance
- Suicide prevention and education
- Sexual assault counseling
- Supervised independent living
- Counseling
- Homemaker program for senior citizen
- Counseling for victims of abuse or assault

5th Highest Rate in Nation

Louisiana has nearly twice the national average of women murdered by men - among the leading causes of death for pregnant women in Louisiana

79.4 per 100 persons

Louisiana's providers lead the nation for writing opioid prescriptions - national average is 51.4 per 100 persons

211 resource line features the keyword OPIOID

provides all addiction resources in a zip code

Our initiatives fill the gaps we have identified as critical and not being met by another agency.


SINGLECARE - PRESCRIPTION DISCOUNT PROGRAM

A partnership focused on improving the health of individuals, families and communities by helping to make prescription medications more affordable.

 1,944 prescriptions filled
\$140,717.40 saved with discount

UNITED AGAINST CHILD HUNGER

Weekend Food Packs are created for the Summer Feeding Programs in Southwest Louisiana so children have access to easy-to-eat foods over the weekend.

 6,000 Weekend Food Packs distributed
24,000 meals given out over the course of the summer

CRISIS CHAT ONLINE

An online chat for anyone who is going through a difficult time, having thoughts about suicide or just needs to talk. It is confidential and operated by professionally-licensed crisis intervention specialists.

1,090 individuals chatted with a counselor during a crisis

833.TXT.TEEN

This texting platform for teens serves anyone ages 13-22, in any type of crisis. It provides confidential access to 24/7 support from professionally-licensed counselors.

62 teens assisted during a crisis



Ask for the United Way of Southwest Louisiana Community Investment Strategy Map for more info.



48th

in the nation for **OPPORTUNITY**

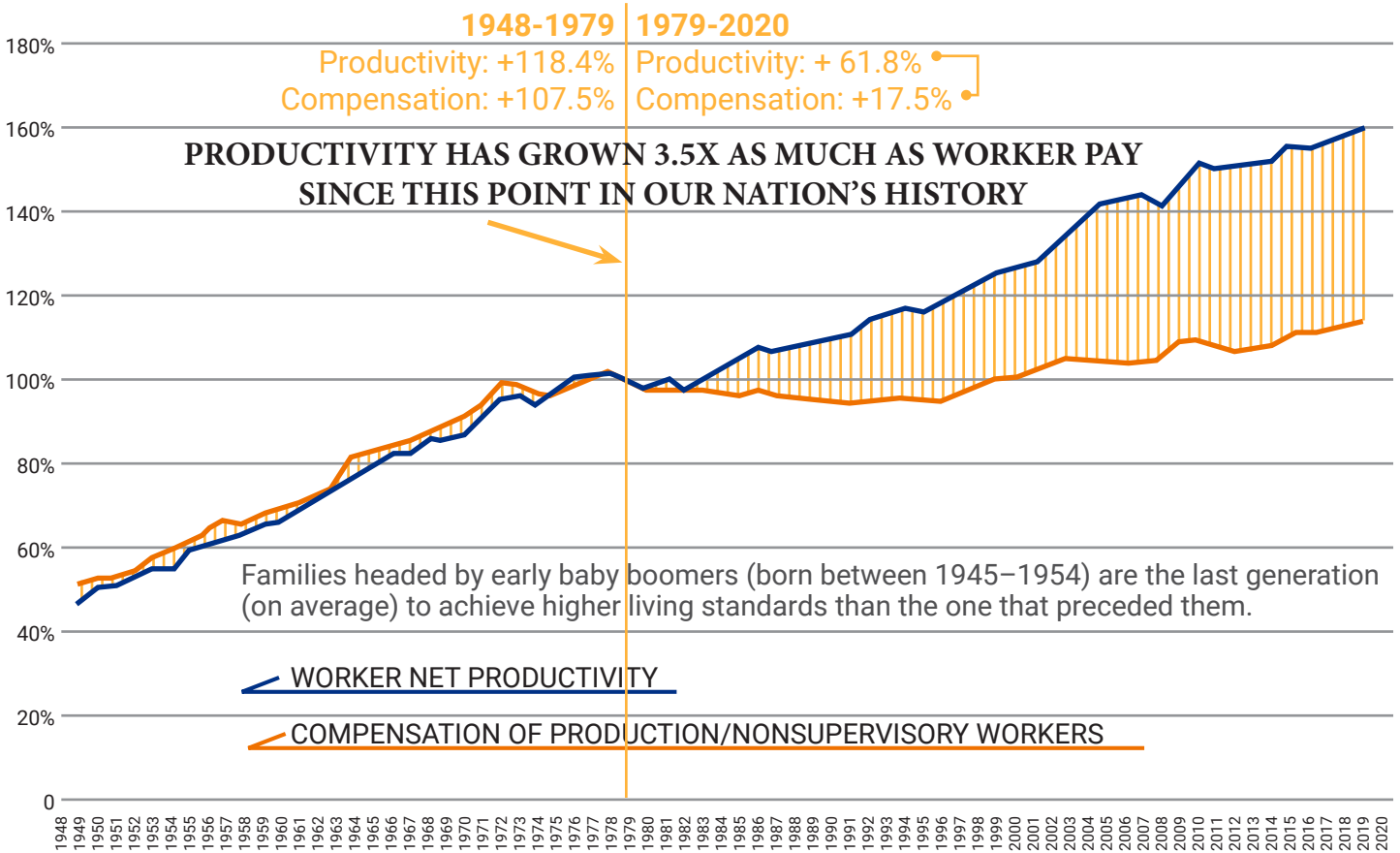
A lack of economic opportunity and equality hold Louisiana at 48

Louisiana has the largest gender pay gap in the nation

ECONOMIC MOBILITY *Southwest Louisiana*

Economic mobility is influenced by a variety of factors including education, neighborhoods, savings and family structure. Louisiana joins Oklahoma and South Carolina in a PEW Research study showing the worse economic mobility for their citizens than the national average on all three measures investigated.

Economic mobility is also fundamental to the American Dream. The ability to move up or down the economic ladder within a lifetime or from one generation to the next has been essential to the growth of the country.



Liquid Asset Poverty

The amount of liquid savings that households have on hand in order to cover three months of basic living expenses.

-includes cash and financial assets that can be sold quickly

	ALLEN	BEAUREGARD	CALCASIEU	CAMERON	JEFF DAVIS	LA	U.S.
Liquid Asset Poverty Rate	43.1%	36.1%	36.6%	33.2%	42%	50.6%	36.9%
Households with zero net worth	14.6%	13.2%	16.8%	10.1%	16.1%	17.1%	15.7%
Unbanked households	7%	5.9%	6.8%	4.1%	8.1%	14.8%	6.5%

Home borrowers using alternative financing

Annual family income less than \$50,000	23%
Annual family income greater than \$50,000	3%

Why does it matter?

Having few or no assets to rely on in the event of a financial setback such as a medical crisis or job loss makes weathering difficult times more stressful and uncertain.

New research shows it can have lifetime impacts on the children in these families as well. Children who grow up in poverty experience increased risks for lifelong hardship.

Experiencing financial insecurity and poverty without the tools to respond when setbacks happen can lead to eviction and a lack of basic necessities.



Southwest Louisiana

Our goal for families and individuals in Southwest Louisiana is an unemployment rate of 3.5% or less.

We have three priority areas

- Economic Mobility
- Workforce Development
- Earnings

May 2022 Unemployment Rates

Louisiana	Allen	Beauregard	Calcasieu	Cameron	Jeff Davis
3.5%	3.6%	2.7%	3.4%	2.2%	3%

How are we creating long-term change?

- Adult certification programs
- Adult financial education programs
- K-12 financial literacy education programs
- Homebuyer counseling and education programs
- Vocational programs for adults
- Blueprint incentive program
- Workforce counseling



Our initiatives fill the gaps we have identified as critical and not being met by another agency.

**VITA
VOLUNTEER INCOME TAX ASSISTANCE**

IRS certified United Way volunteers offer free income tax prep for low-income individuals, persons with disabilities, the elderly and limited English speaking taxpayers.

 4,181 tax returns prepared
\$4,753,632 in economic impact from refunds and credits

**CAL-PRI
CALCASIEU PRISONER RE-ENTRY**

This vital program is a link between formerly incarcerated individuals and the resources available to help them succeed with a new life in the job market and community.

 211 members assisting individuals re-entering the community
11 monthly meetings to share resources and assistance

MATCHED SAVINGS

This program teaches saving and budget habits for those working toward a home purchase. Participants are encouraged to build a down payment with a dollar match upon graduation.


New initiative

BANK ON SWLA

Partnerships with banks and credit unions work to ensure low-income households have access to safe and affordable financial products and services.

New initiative with 3 financial partners ready to kick off

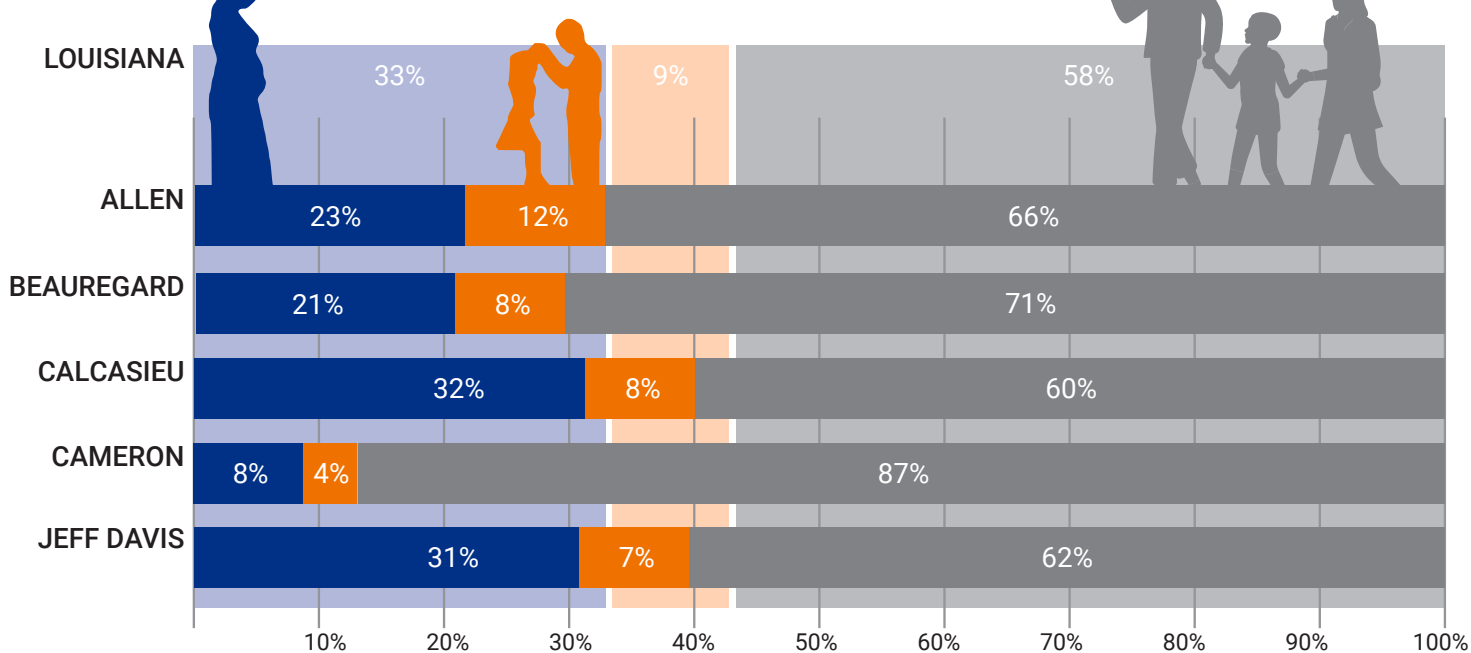
Ask for the United Way of Southwest Louisiana Community Investment Strategy Map for more info.

A group of children are playing hopscotch on a paved area. The hopscotch grid is painted with colorful squares in shades of blue, yellow, orange, and green, with white numbers 1 through 9. A boy in a light blue t-shirt and black shorts is in the middle of a hop. Another boy in a dark blue long-sleeved shirt and camouflage shorts is pointing towards the grid. Other children and adults are visible in the background.

Louisiana has the nation's largest gender wage gap.
Children living in families headed by a single mother are more likely to go without basic necessities.

BASIC NEEDS *Southwest Louisiana*

FAMILY HOUSEHOLD TYPES WITH CHILDREN UNDER 18



Single Mother

Households receiving food stamps that are run by a single mother	Parish	Percentage
Louisiana	Louisiana	34%
Allen	Allen	19%
Beauregard	Beauregard	28%
Calcasieu	Calcasieu	36%
Cameron	Cameron	35%
Jeff Davis	Jeff Davis	35%

Single Father

Married

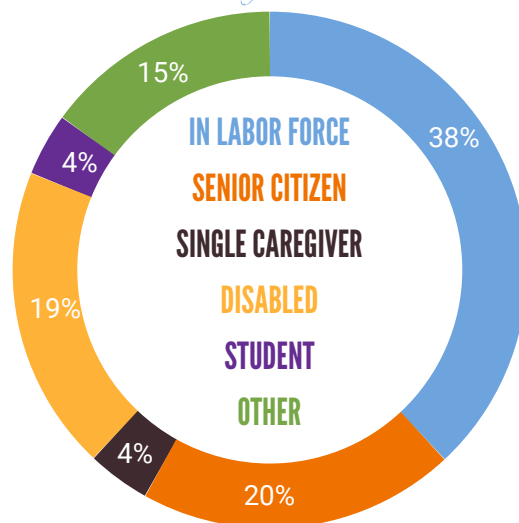
Households receiving food stamps that are run by a married couple	Parish	Percentage
Louisiana	Louisiana	13%
Allen	Allen	28%
Beauregard	Beauregard	18%
Calcasieu	Calcasieu	16%
Cameron	Cameron	39%
Jeff Davis	Jeff Davis	14%

Across Louisiana, a shortage of rental homes affordable and available to low income households exists. A household is considered "cost burdened" if it spends more than 30% of the monthly income on rent.

Cost burdened renters are more likely to sacrifice healthy food and healthcare to pay the rent. These households are also more likely to experience unstable situations and eviction.

	Percent of total households that are renters	Number of full-time jobs required at minimum wage to afford a 2BR
Louisiana	34%	2.5
Allen	25%	1.9
Beauregard	23%	1.9
Calcasieu	33%	2.3
Cameron	16%	2.3
Jeff Davis	27%	1.9

Who is an extremely low income renter?





Our goal for individuals in Southwest Louisiana is to decrease the number of people dependent on assistance programs.

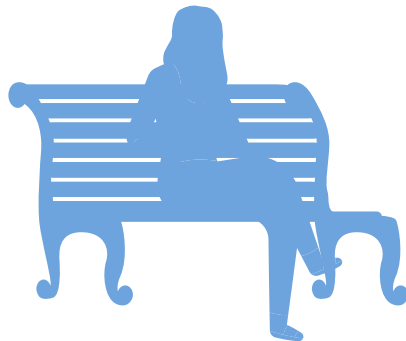
- We have two priority areas
- Crisis
 - Resources

Children eligible for free or reduced lunch

Louisiana	Allen	Beauregard	Calcasieu	Cameron	Jeff Davis
57%	52%	51%	53%	41%	53%

How are we creating long-term change?

Emergency shelter
 Emergency assistance
 Civil legal services



Our initiatives fill the gaps we have identified as critical and not being met by another agency.

SWLA VOAD VOLUNTEER ORGANIZATIONS ACTIVE IN DISASTER

Provides a place where governmental, faith-based, and non-profit organizations can cooperate, communicate, coordinate, and collaborate in the event of a disaster.

109 homes assisted with storm repairs
 60% were the homes of senior citizens

211 | 898-211

An easy-to-remember phone number that links people in need to relevant information in the complex maze of human services with an accurate database of public and community-based resources, even during a disaster.

28,914 calls, texts and searches for resources

SUMMER OF SERVICE

Specifically designed for ages 12 to 18, the program has five human services projects each summer. Projects focus on a group of community members who are most in need and illustrate the value of serving others.

THE PATH HOME

Program which facilitates the matching of resources with the individuals and families needing assistance with issues surrounding homelessness. The goal is to help those affected move toward stable housing and a successful future.

Ask for the United Way of Southwest Louisiana Community Investment Strategy Map for more info.

GIVE

WHEN YOU GIVE TO UNITED WAY OF SOUTHWEST LOUISIANA, YOU ARE PUTTING RESOURCES DIRECTLY WHERE THEY WILL CREATE LONG-TERM CHANGE IN THE LIVES OF YOUR FRIENDS AND NEIGHBORS.

YOU CAN ALSO BE SURE WHEN IT REALLY COUNTS, UNITED WAY'S EXPERIENCED TEAM WILL BE ON THE GROUND AND AT THE FOREFRONT OF THE RELIEF EFFORT.

NEED HELP?

WHETHER IT'S YOU OR SOMEONE YOU KNOW, WE WANT HELP TO BE AT YOUR FINGERTIPS WHEN YOU NEED IT.

211 IS OUR INFORMATION AND REFERRAL SERVICE OPERATED 24/7/365 BY LIVE OPERATORS THAT SPECIALIZE IN FINDING EXACTLY WHAT YOU NEED.

DIAL 211
TEXT 898-211
ONLINE UNITEDWAYSWLA.ORG/211



ONLINE
UNITEDWAYSWLA.ORG/DONATE

TEXT
UWSWLA to 41444
DISASTERFUND to 41444

MAIL
815 RYAN STREET LAKE CHARLES, LA 70601

GOODS OR SERVICES FOR DISASTER RECOVERY
UNITEDWAYSWLA.ORG/DONATIONS

UNITEDWAYSWLA.ORG

Need help: [unitedwayswla.org/help](https://www.unitedwayswla.org/help)
To give: [unitedwayswla.org/donate](https://www.unitedwayswla.org/donate)

 [facebook.com/unitedwayofswla](https://www.facebook.com/unitedwayofswla)

 [@unitedwayswla](https://www.instagram.com/unitedwayswla)

 [@unitedwayofswla](https://www.twitter.com/unitedwayofswla)

 [youtube.com/unitedwayofswla](https://www.youtube.com/unitedwayofswla)

 [linkedin.com/unitedwayswla](https://www.linkedin.com/unitedwayswla)



815 Ryan Street
Lake Charles, LA
70601
337.433.1088

**United Way
of Southwest Louisiana**

Toll Free
800.433.1088
liveunited@unitedwayswla.org

We operate in the **TOP 9%** of all U.S. United Ways, maintain a **4-STAR** charity rating with Charity Navigator and received a **GOLD SEAL OF TRANSPARENCY** from GuideStar/Candid.

